

Single Mist Panel 44×20 IP

880w High-Powered, IP65 Wash Light



User Manual

Contents

Contents	2
Introduction and Setup	3
Unpacking and In the Box	3
Features	3
Mounting and Operation	4
Frost Filter and Barn Doors Installation	4
Customer Support	4
Setup and Operation	6
Using the LCD Menu and Buttons	6
DMX Setup	7
DMX Basics	7
DMX Wiring	8
DMX Channel Mode Sheet:	9
Maintenance	10
Routine Maintenance	10
Troubleshooting Problems	10
Technical Specifications	11
Photometrics	11

Introduction and Setup

Unpacking and In the Box

Thank you for choosing our Single Mist Panel 44×20 IP. For your own safety, please read this manual before installing or using the device. This manual covers the important information on installation and applications. Please install and operate the fixture with following instructions. Meanwhile, please keep this manual for future needs.

In the box you will receive:

- Single Mist Panel 44×20 IP 1
- Omega Clamps 2
- 3 Pin DMX Cable 1
- True1 Compatible Power Cable 1
- Frost Filter 1
- Barndoors 1

Features

- 44x20 Hex (RGBAW+UV) LED's
- 100,000 Hour LED life
- 25° Lens and 40° with included frost filter.
- IP65 Outdoor Rated
- CRMX wireless DMX Built-In
- Fanless Heatsink Cooling

Mounting and Operation

Clamp Mounting: The Single Mist Panel 44×20 IP provides omega brackets which you can attach a clamp to for typical clamp mounting. Once the clamps are attached to the omega brackets, you can attach the omega brackets to the fixture via the 1/4 turn fasteners.

As an added safety measure be sure to attach at least one properly rated safety cable to the fixture using one of the handles.

Frost Filter and Barn Doors Installation

The included frost filters and barn doors may be installed using the (4) 3mm allen screws on the corners of the fixture's front. Remove and replace the screws when installing/uninstalling either the frost, barn doors, or both.

Customer Support

WARRANTY POLICY

GAMMA LED Vision warrants its products for the periods set below from the date of purchase to be free of manufacturer and workmanship defects. Warranty does not cover normal wear and tear caused by force, negligence or misuse of products. GAMMA LED Vision is not responsible for any damages or injury caused by misuse or improper handling of the products and in accordance with instructions and specifications of manual.

Warranty terms are as follows:

LED Fixtures:

Indoor: 2 Years

Outdoor (IP 54 or higher): 1 Year

Lamp Fixtures: 1 year / excludes the lamp

LED Video Products:

Indoor: 2 Years

Outdoor (IP 54 or higher): 1 Year

Controllers: 2 years

Batteries: 6 months

All Trussing Related Products and Accessories: 1 Year

Please visit WWW.GAMMALEDVISON.COM for complete Limited Warranty terms and contact information.

Setup and Operation

Using the LCD Menu and Buttons

The LCD system includes Menu, Up, Down, and Enter buttons to the right of the LCD screen. Press “Menu” to enter the menu or to go back from a sub-menu. Use “Up”/”Down” to navigate through the choices, and use “Enter” to save your choices.

The menu options are as follows:

Main Menu Option	Sub Menu Operation	Key Operation
DMX Setting	DMX Address	Set the DMX Address
	Channel Mode	Set the DMX Mode - 6CH or 10CH
Static		Set Each LED and dimmer brightness manually for non-DMX use.
CRMX	Data LED	Indicator for CRMX Data
	Link LED	Indicators for CRMX Link: <ul style="list-style-type: none"> • Flashing On/Off: CRMX detected, but not connected. • Quick Flash: CRMX detected, but no DMX. • Solid Green: CRMX Connected with DMX present.
	Connect Button	Press this to pair with a CRMX Transmitter.
	RX/TX Mode	Set to Receive or Transmit Wireless DMX
	Module Power	Enable/Disable CRMX
Macro		Choose a stand-alone macro and adjust the speed and dimmer
Setting	DMX State	Set the behavior when DMX is lost: Standby (Blackout) or Keep

Main Menu Option	Sub Menu Operation	Key Operation
		(Hold last DMX Value)
	Dim Curve	Set the Dimmer Curve
	Dim Freq	Set the PWM Frequency
	Dim Speed	Set the Dimmer Speed (Slow to Fast)
	Dim Mode	Set the Dimming Mode (8 Bit of 16 Bit)
	Fan Mode	Set the fan mode
	M/S Mode	Set the fixture to Master/Slave for synchronized Macro/standalone modes.
	Display Invert	Flip the display for hanging fixtures.
	Backlight	Set the display sleep time after inactivity.
	Lock	Turn on the display/controls lock after inactivity.
	Language	Set the Language (English or Chinese)
Information		See diagnostic information about the firmware and current LED temperature.

DMX Setup

DMX Basics

DMX512 stands for digital multiplex 512. This means that 512 channels are controlled digitally through 1 data cable.

A channel is a set of 255 steps that are assigned to control attributes in each light. This may be a color like red, green or blue, and intensity, strobe, pan/tilt or other attributes.

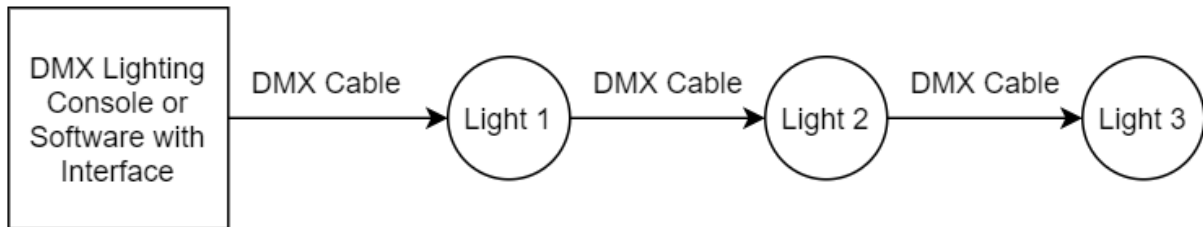
Multiple sets of 512 “universes” may be used. Only 1 universe will travel on a DMX cable, but through networked DMX (Art-Net or sACN E1.31), many universes can travel over a network.

DMX Wiring

DMX works by connecting 1 or multiple lights to the output of a DMX lighting console or software with a DMX interface.

DMX lights connect in what is called a “daisy-chain”. Your first DMX cable will plug its male DMX connector into the female DMX connector on your lighting console. The remaining female connector will then connect to the DMX input on your first light.

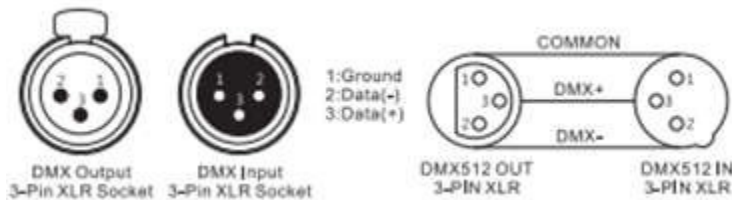
You may then connect your next fixture to the output of your first light, and continue the chain.



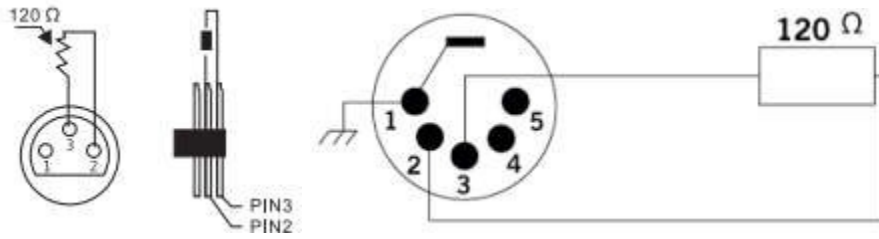
32 Fixture Rule – DMX only allows you to connect up to 32 fixtures in a single daisy chain for signal strength. Sometimes, depending on the fixtures and cable length, this number is less (or more).

DMX Cables can be 3-pin or 5-pin. These use the same type of data, and in the 5-pin only pins 1, 2, and 3 are used. The cable should be a 2 conductor, shielded cable of at least 110 ohms resistance. Microphone cable is not DMX cable.

Please refer to the diagram below:



For installations where the DMX cable has to run a long distance or is in an electrically noisy environment, it is recommended to use a DMX terminator. This helps in preventing corruption of the digital control signal by electrical noise and reflections. The DMX terminator is simply an XLR plug with a 120 Ω resistor connected between pins 2 and 3, which is then plugged into the output XLR socket of the last fixture in the chain. Please see illustrations below:



DMX Channel Mode Sheet:

6CH	10CH	Function	Channel Value	Description
	1	Intensity	0-255	Dimmer Control
	2	Strobe	0-5	No Function
			6-255	Strobe, Slow to Fast
	3	Macro	0-5	No Function
			6-50	Color Chase
			51-100	Color Fade
			101-255	Color Pulse
	4	Macro Speed	0-255	Macro Speed, Slow to Fast
1	5	Red	0-255	Intensity Control of Red
2	6	Green	0-255	Intensity Control of Green
3	7	Blue	0-255	Intensity Control of Blue
4	8	White	0-255	Intensity Control of White
5	9	Amber	0-255	Intensity Control of Amber
6	10	UV	0-255	Intensity Control of UV

Maintenance

Routine Maintenance

Fan Cleaning

Periodically do a visual inspection of the fans. If they are dirty, power off the unit and use a small electronics vacuum to clean the fans out. Do not use a can of CO2 or an Air Compressor. These will simply blow the dust into the unit and may leave other residue.

Front Lens Cleaning

The front lens should be cleaned so that light output is maintained.

With the light powered off, use a moist, lint-free cloth. Never use alcohol or solvents to clean the fixture.

Never spray any cleaners on the fixture.

Troubleshooting Problems

The following are a few common problems that may occur during operation. Here are some suggestions for easy troubleshooting:

A. The unit does not work:

- Check that the unit is plugged in to a working power connector.
- Press the menu button to confirm that the unit is powered on. If the screen does not light up, the unit has no power.

B. Not Responding to the DMX Controller

- Check DMX cables to verify that they are plugged in and functional.
- Check the DMX address and mode – does it match the address and mode patched in the lighting console or software?
- Plug the light directly into the DMX controller with a cable that you know is good. Unplug all other lights – does it work?
- Try to use another DMX controller.

Technical Specifications

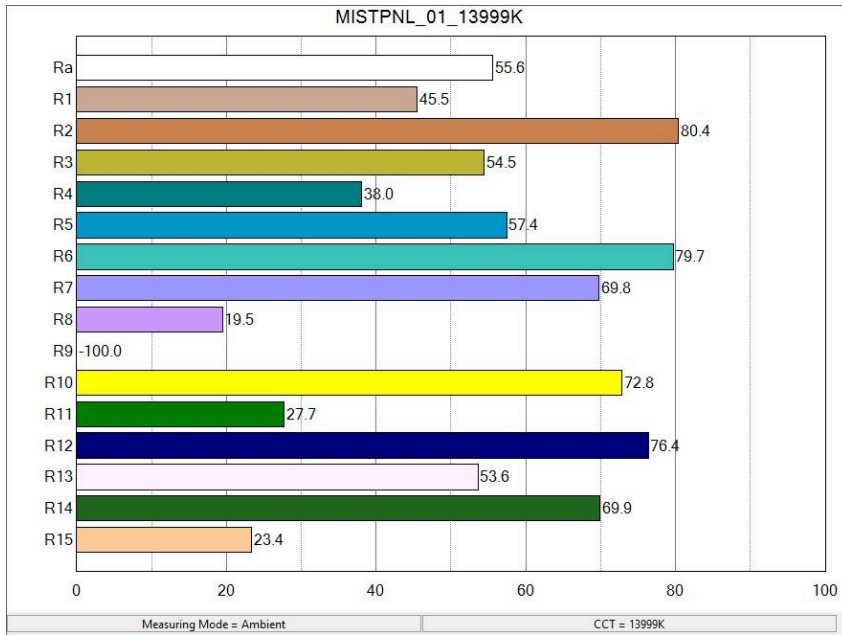
- 44x20 Hex (RGBAW+UV) LED's
- 25° Lens and 40° with included frost filter.
- IP65 Outdoor Rated
- Marine-Grade Coating
- WDMX/CRMX Built-In
- Fanless Heatsink Cooling
- 4-Button LCD display
- True1 connector IN/OUT
- 3-Pin XLR connectors IN/OUT
- Fanless heatsink cooling
- 40°C Max ambient temperature
- IP20 protection rating
- AC100-230V 50-60HZ
- Max. Power: 880W
- Dimensions: 21" x 16" x 9"
- Net Weight: 38lbs
- RDM UID: 025ab8f42a06

Photometrics

Distance in Ft	FC at Full - No Diffuser - 25°	FC at Full - With Diffuser - 40°
5	3496	2761
10	1202	1007
15	437	374
25	165	134
50	41	33

Color Quality

CRI:



TM30:

