

Luxé Rosé XT 200Z VW

*200w Cold White/Warm White Fresnel with Motorized
Zoom*



User Manual

Table of Contents

1. Introduction and Setup.....	3
Unpacking and In the Box.....	3
Mounting and Operation.....	3
Features.....	3
Safety Precautions.....	4
Customer Support.....	5
2. Setup and Operation.....	6
Using the LCD Menu and Buttons.....	6
Menu Operation.....	6
DMX Setup.....	7
DMX Basics.....	7
DMX Wiring.....	7
DMX Modes and Configuration.....	9
3. Maintenance.....	10
Routine Maintenance.....	10
Troubleshooting Problems.....	10
4. Technical Specifications.....	11
Photometric Reports.....	12

1. Introduction and Setup

Unpacking and In the Box

Thank you for choosing our Luxé Rosé XT 200Z VW. For your own safety, please read this manual before installing or using the device. This manual covers the important information on installation and applications. Please install and operate the fixture with following instructions. Meanwhile, please keep this manual for future needs.

In the box you will find:

- Luxé Rosé XT 200Z VW Fixture: 1
- PowerCon Cable: 1
- DMX Signal Cable 1

Mounting and Operation

Use a clamp rated for the full weight of the Luxé Rosé XT 200Z VW to hang the fixture from the mount(s) on the fixture's yoke.

As an added safety measure be sure to attached at least one properly rated safety cable to the fixture using on of the safety cable rigging point integrated in the base assembly or on the yoke.

Features

- Voltages: AC 100V-240V, 50/60Hz
- Power Consumption: 250W@230V
- LED: Light Source: 200W
- Cool White & Warm White COB Led
- Manufacturers Rated LED Life: 50000 Hours
- Full mixing of Cool and Warm White and Color Temperature Presets
- Dimming: 0-100%
- Strobe: Electronic Strobe Variable from 0-25hz
- Zoom Angle: 5°-60°
- Control: DMX512 3 pin w/RDM Control Protocol

- Control Mode: DMX512 / Master-Slave / Auto / Sound
- Housing: Cast aluminum, IP20 Indoor

- Working Environmental Temperature: -10°C-40°C
- Net weight : 7.50Kg

Safety Precautions

Please keep this User Guide for future consultation. If you sell the unit to another user, be sure that they also receive this instruction manual.

Caution: For added protection mount the fixtures in areas outside walking paths, seating areas, or in areas where the fixture might be reached by unauthorized personnel.

Before mounting the fixture to any surface, make sure that the installation area can hold a minimum point load of 10 times the device's weight.

Fixture installation must always be secured with a secondary safety attachment, such as an appropriate safety cable.

Never stand directly below the device when mounting, removing, or servicing the fixture.

From a ceiling, or set on a flat level surface (see illustration below). Be sure this fixture is kept at least 0.5m (1.5ft) away from any flammable materials (decoration etc.).

Always use and install the supplied safety cable as a safety measure to prevent accidental damage and/or injury in the event the clamp fails.

DO NOT connect the device to any dimmer pack.

During initial start-up some smoke or smell may arise. This is a normal process and does not necessarily mean that the device is defective, and it will decrease gradually within 15 minutes.

Don't try to modify the fixture without any instruction by the manufacturer.

Warranty is voided if there are any malfunctions from not following the user manual while operating or any hazardous operation, like shock short circuit, electronic shock, lamp broken, etc.

Customer Support

WARRANTY POLICY

GAMMA LED Vision warrants its products for the periods set below from the date of purchase to be free of manufacturer and workmanship defects. Warranty does not cover normal wear and tear caused by force, negligence or misuse of products. GAMMA LED Vision is not responsible for any damages or injury caused by misuse or improper handling of the products and in accordance with instructions and specifications of manual.

Warranty terms are as follows:

LED Fixtures:

Indoor: 2 Years

Outdoor (IP 54 or higher): 1 Year

Lamp Fixtures: 1 year / excludes the lamp

LED Video Products:

Indoor: 2 Years

Outdoor (IP 54 or higher): 1 Year

Controllers: 2 years

Batteries: 6 months

All Trussing Related Products and Accessories: 1 Year

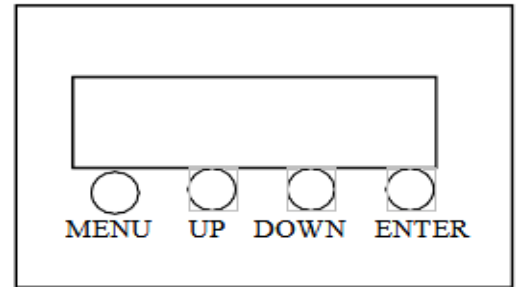
Please visit WWW.GAMMALEDVISION.COM for complete Limited Warranty terms and contact information.

2. Setup and Operation

Using the LCD Menu and Buttons

Turn on the light, press the **MENU** button to enter the menu mode, use the **UP** and **DOWN** buttons to find the menu,

When the preset menu is displayed on the display screen, press the **ENTER** button to confirm, use the **UP** and **DOWN** buttons to select the sub menu, press the **ENTER** button to save the settings or automatically return to the previous menu.



Press the **MENU** button to return, or wait for one minute and then exit the menu mode automatically. When there is no power connection, press the **UP** button for 1 minute to enter the menu mode. After setting, press **MENU** button to return to the previous menu.

Menu Operation

MENU	A001	Set DMX Address, 1-512
	CC99	Automated programs, color chasing. Up/Down keys change speed from 01-99.
	DE99	Automated programs, color pulsing. Up/Down keys change speed from 01-99.
	BE00	Automated programs, sound-active mode. Up/Down keys change sensitivity from 01-99.
	W255	White Dimmer (Manual Mode) 000-255
	F255	Linear Zoom (Manual Mode) 000-255
	N000	Strobe (Manual Mode) 000-255

DMX Setup

DMX Basics

DMX512 stands for digital multiplex 512. This means that 512 channels are controlled digitally through 1 data cable.

A channel is a set of 255 steps that are assigned to control attributes in each light. This may be a color like red, green or blue, and intensity, strobe, pan/tilt or other attributes.

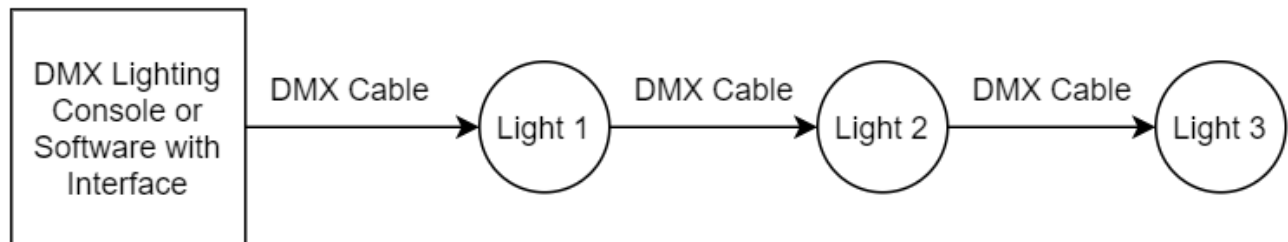
Multiple sets of 512 "universes" may be used. Only 1 universe will travel on a DMX cable, but through networked DMX (Art-Net or sACN E1.31), many universes can travel over a network.

DMX Wiring

DMX works by connecting 1 or multiple lights to the output of a DMX lighting console or software with a DMX interface.

DMX lights connect in what is called a "daisy-chain". Your first DMX cable will plug its male DMX connector into the female DMX connector on your lighting console. The remaining female connector will then connect to the DMX input on your first light.

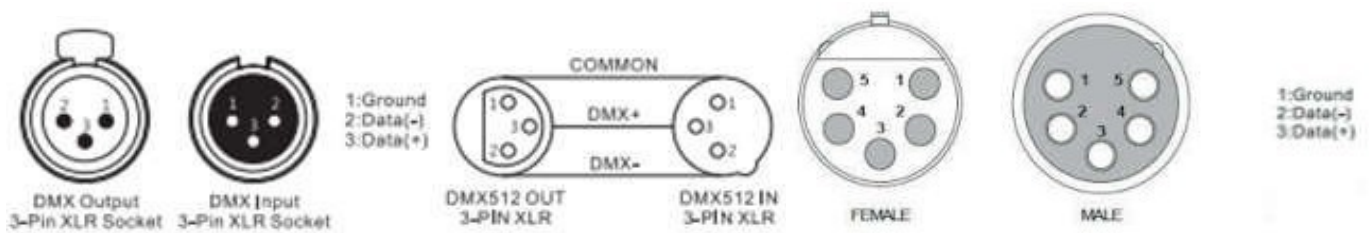
You may then connect your next fixture to the output of your first light, and continue the chain.



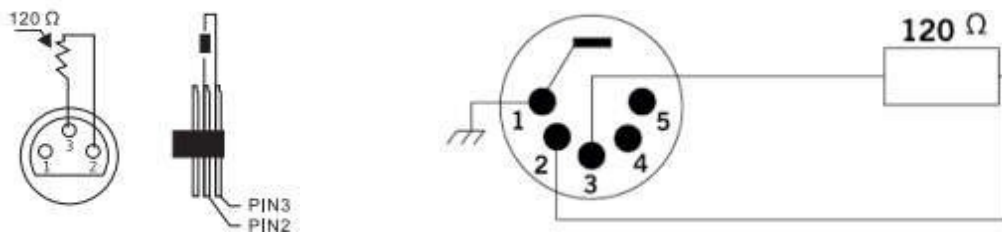
32 Fixture Rule – DMX only allows you to connect up to 32 fixtures in a single daisy chain for signal strength. Sometimes, depending on the fixtures and cable length, this number is less (or more).

DMX Cables can be 3-pin or 5-pin. These use the same type of data, and in the 5-pin only pins 1, 2, and 3 are used. The cable should be a 2 conductor, shielded cable of at least 110 ohms resistance. Microphone cable is not DMX cable.

Please refer to the diagram below:



For installations where the DMX cable has to run a long distance or is in an electrically noisy environment, it is recommended to use a DMX terminator. This helps in preventing corruption of the digital control signal by electrical noise and reflections. The DMX terminator is simply an XLR plug with a 120 Ω resistor connected between pins 2 and 3, which is then plugged into the output XLR socket of the last fixture in the chain. Please see illustrations below:



DMX Modes and Configuration

The Luxé Rosé XT 200Z VW offers a 7 channel DMX mode.

DMX Channel Mode Sheet:

7CH	Function	Channel Value	Description
1	Master Dimmer	0-255	Master Intensity Control
2	Warm White	0-255	Warm White Control
3	Cool White	0-255	Cool White Control
4	Color Temperature Presets	0-15	No Function
		16-30	3000k Color Temperature
		31-45	3200k
		46-59	3400k
		60-74	3600k
		75-89	3800k
		90-104	4000k
		105-119	4200k
		120-134	4400k
		135-149	4600k
		150-164	4800k
		165-179	5000k
		180-194	5200k
		195-209	5400k
210-224	5600k		
225-240	5800k		
240-255	6000k		
5	Zoom	0-255	Zoom Control, 5°-60°
6	System Reset		

3. Maintenance

Routine Maintenance

The cleaning of lens must be carried out periodically to optimize light output. Cleaning frequency depends on the environment in which the fixture operates: damp, smokey, or particularly dirty surrounding can cause greater accumulation of dirt on the fixture's optics.

- Clean with a damp, soft cloth..
- Always dry the parts carefully.
- Clean the external optics at least every 20 days in demanding environments.

Troubleshooting Problems

The following are a few common problems that may occur during operation. Here are some suggestions for easy troubleshooting:

A. The unit does not work:

- Check that the unit is plugged in to a working power connector.
- Press the menu button to confirm that the unit is powered on. If the screen does not light up, the unit has no power.

B. Not Responding to the DMX Controller

- Check DMX cables to verify that they are plugged in and functional.
- Check the DMX address and mode – does it match the address and mode patched in the lighting console or software?
- Plug the light directly into the DMX controller with a cable that you know is good. Unplug all other lights – does it work?
- Try to use another DMX controller.

4. Technical Specifications

- Voltages: AC 100V-240V , 50/60Hz
- Power Consumption: 250W@230V
- LED: Light Source: 200W Cool White & Warm White COB Led Quantity: 1pcs
- Manufacturers Rated LED Life 50000 Hours
- Colors: linear color mixing with Macro
- Dimmer: 0-100% linearly adjustable
- Strobe: Electronic Strobe 0-25hz
- Zoom Angle: 5 -60°
- Control: DMX512, 3 pins interfaces RDM Control Protocol
- 3 Channels in standard mode Master/Slave Synchronous
- Control Mode: DMX512 / Master-Slave / Auto / Sound
- Housing: Cast aluminum, IP20 Indoor
- Working Environment: -10°C-40°C
- Box Dimension: Inner: 300*300*510mm (CONVERT)
- Fixture Dimension 280*185*380mm
- Net weight : 7.50Kg

Photometric Reports

Zoom Out (60°)

Photometric Data	FC Full – 3900k	FC Warm White – 2950k	FC Cool White - 5700k
10'	108	56	57
15'	49	26	25
20'	29	15	14
25'	21	11	11

Zoom In (5°)

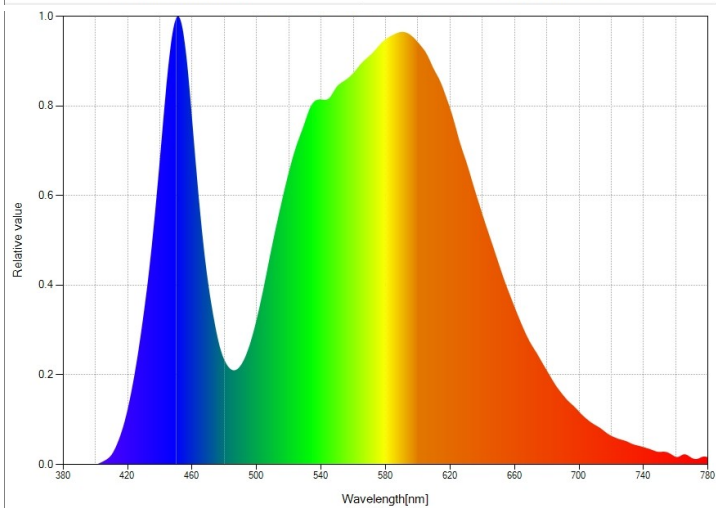
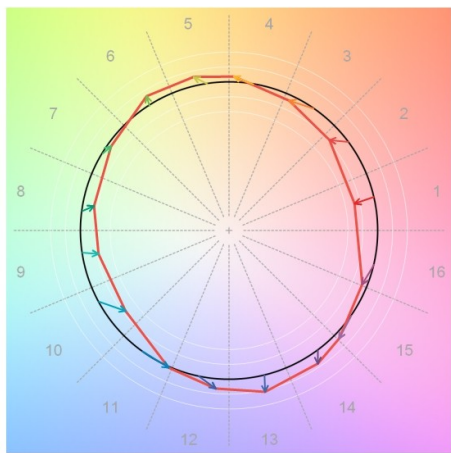
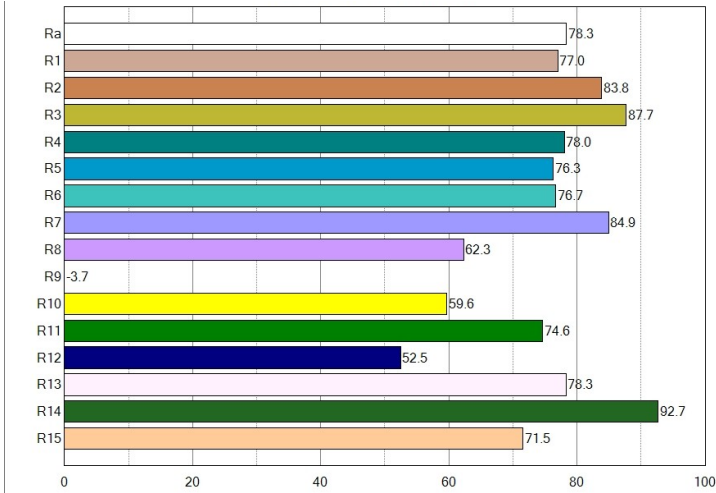
Photometric Data	FC Full – 3900k	FC Warm White – 2950k	FC Cool White - 5700k
10'	710	360	380
20'	193	98	102
25'	130	66	68
30'	88	45	46

50% Zoom (27.5°)

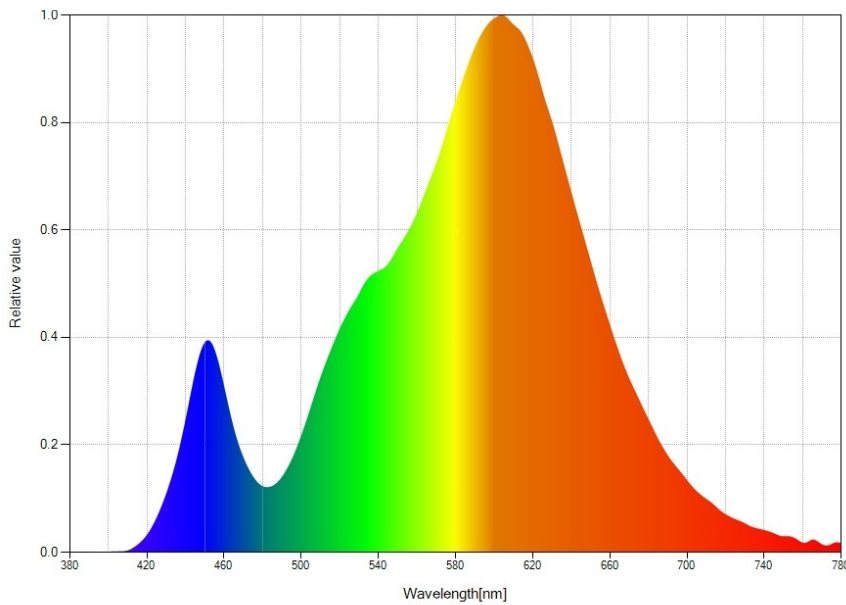
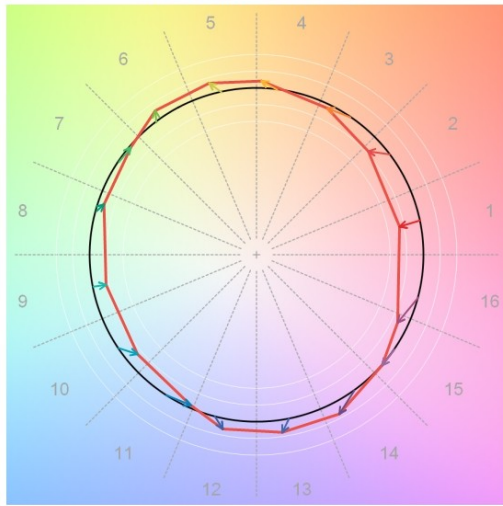
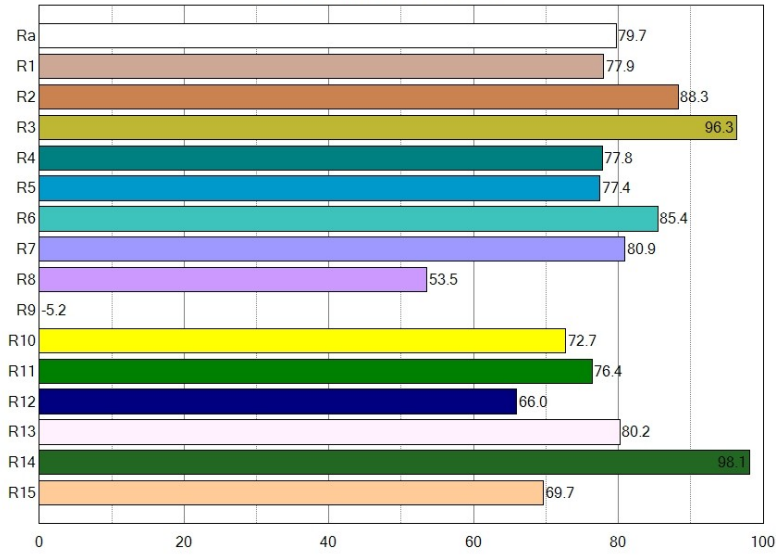
Photometric Data	FC Full – 3900k	FC Warm White – 2950k	FC Cool White - 5700k
10'	262	109	162
15'	125	45	72
20'	71	30	45
25'	47	20	29

CRI, TM-30 and Spectral Distribution

Full White: CRI 78.3, 3900k



Warm White ONLY: CRI 79.7, 2950k



Cool White ONLY: CRI 73, 5700k

